

3/4" SOCKET WRENCHES

EGA Master offers a wide range of socket wrenches, both shallow and deep range series, together with a large number of additional and complementary items, such as adapters, hinged handles, extensions, ratchet wrenches, etc.

1/4", 3/8", 1/2", 3/4" and 1" square drive hand-operated sockets and 3/8", 1/2", 3/4", 1", 1.1/2", 2.1/2" and 3.1/2" square drive impact sockets wrenches, being the only in the sector offering such a wide range.



both in mm and inches

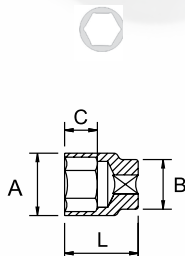
6 or 12 edges.



The sockets are made of **chrome-vanadium steel**, designed to withstand high tightening torques with minimal wear, providing the same greater durability.

SOCKET WRENCHES

3/4" mm



| COD X | mm | L | A | B | C | MAXIMUM TORQUE Nm | gr. | |
|-------|------|----|----|----|----|-------------------|------|----|
| 60501 | 19mm | 30 | 33 | | | | | |
| 60502 | 21mm | 32 | | 14 | | 569 | 210 | |
| 60503 | 22mm | 33 | | 15 | | | | |
| 60504 | 23mm | 33 | | | | | | |
| 60505 | 24mm | 34 | 36 | | | | | |
| 60506 | 25mm | 36 | | 17 | | 583 | 220 | |
| 60507 | 26mm | 36 | | | | 624 | | |
| 60508 | 27mm | 38 | | | | 665 | | |
| 60509 | 28mm | 39 | | 24 | | 707 | 230 | 10 |
| 60510 | 29mm | 40 | | | | 751 | 250 | |
| 60511 | 30mm | 42 | | | | 795 | 290 | |
| 60512 | 32mm | 44 | 38 | 26 | | 888 | 300 | |
| 60513 | 33mm | | | 28 | | 932 | | 1 |
| 60514 | 34mm | 46 | | 26 | | 984 | 330 | |
| 60515 | 35mm | 48 | | 28 | | 1000 | 390 | |
| 60516 | 36mm | 50 | 42 | 29 | | 1084 | 420 | |
| 60517 | 38mm | 50 | | 43 | 31 | 1200 | 470 | |
| 60518 | 40mm | 60 | | | | 1316 | 500 | |
| 60519 | 41mm | 65 | 55 | 45 | 34 | 1353 | 550 | |
| 60520 | 42mm | | | | | 1450 | | |
| 60521 | 46mm | 70 | 60 | | 37 | | 650 | 5 |
| 60522 | 50mm | 70 | | | 38 | | 850 | |
| 60525 | 54mm | 75 | 75 | 48 | 40 | 1569 | 1000 | |
| 60523 | 55mm | | | | 41 | | | |
| 60524 | 60mm | 80 | 80 | | 45 | | 1100 | |

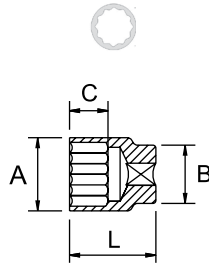
UNE16501:2009, ISO 1711-1 Cr-V DIN 3124

- x 50% aerospace chrome plating
- x 50% mirror polished chrome plating
- y 100% mirror polished chrome plating

SOCKET WRENCHES

3/4"

mm

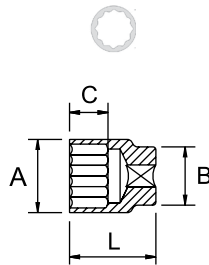


| COD x | mm | A | B | C | MAXIMUM TORQUE Nm | gr. |
|-------|------|----|----|----|-------------------|------|
| 67565 | 19mm | 30 | 33 | | | |
| 67566 | 21mm | | | 14 | | 210 |
| 67567 | 22mm | 32 | | | 569 | |
| 67568 | 23mm | | | 15 | | |
| 67569 | 24mm | 50 | 34 | 36 | | |
| 67570 | 25mm | | | 17 | 583 | 220 |
| 67571 | 26mm | | | | 624 | |
| 67572 | 27mm | | | | 665 | |
| 67573 | 29mm | | | 24 | 751 | 250 |
| 67574 | 30mm | | | | 795 | 290 |
| 67575 | 32mm | | 38 | 26 | 888 | 300 |
| 67576 | 33mm | | | 28 | 932 | |
| 67577 | 34mm | 55 | 46 | 26 | 984 | 330 |
| 67578 | 35mm | | | 28 | 1000 | 390 |
| 67579 | 36mm | | 42 | 29 | 1084 | 420 |
| 67580 | 38mm | | | 31 | 1200 | 470 |
| 67581 | 40mm | 60 | 43 | 31 | 1316 | 500 |
| 67582 | 41mm | | 55 | | 1353 | |
| 67583 | 42mm | 65 | 45 | 34 | 1450 | 550 |
| 67584 | 44mm | | | 37 | 1507 | 600 |
| 67585 | 46mm | 70 | | | 650 | 5 |
| 67586 | 50mm | | 48 | 38 | 850 | |
| 67587 | 54mm | | | 40 | 1569 | |
| 67588 | 55mm | 75 | 75 | 41 | | 1000 |

UNE16501:2009, ISO 1711-1 Cr-V DIN 3124

3/4"

Inch.

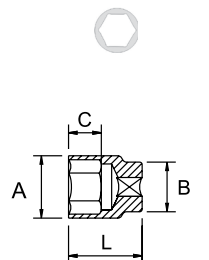


| COD y | AF | Inch | A | B | C | MAXIMUM TORQUE Nm | gr. | |
|-------|----|----------|----|----|----|-------------------|------|-----|
| 60526 | | 3/4" | 30 | | | | 210 | |
| 60527 | | 7/8" | 33 | | | 569 | | |
| 60528 | | 15/16" | 50 | 35 | 36 | 17 | 583 | 220 |
| 60529 | | 1" | | | | 665 | | |
| 60530 | | 1.1/16" | | | 24 | 707 | 270 | |
| 60531 | | 1.1/8" | | | 27 | 795 | | |
| 60500 | | 1.3/16" | | 38 | 25 | 888 | 290 | |
| 60532 | | 1.1/4" | 55 | 44 | 28 | 984 | 310 | |
| 60533 | | 1.5/16" | | 46 | 39 | 29 | 1000 | 350 |
| 60534 | | 1.3/8" | | | 42 | 1084 | 400 | |
| 60535 | | 1.7/16" | 60 | 50 | | 30 | 1200 | 460 |
| 60536 | | 1.1/2" | | | | 1353 | 550 | |
| 60537 | | 1.5/8" | | 55 | 45 | 32 | 1450 | |
| 60538 | | 1.11/16" | 65 | 60 | | 34 | 1569 | 700 |
| 60539 | | 1.13/16" | | | 47 | 35 | | 850 |
| 60540 | | 1.7/8" | 70 | 65 | 48 | 39 | | |
| 60541 | | 2" | | 70 | | 41 | | |

UNE16501:2009, ISO 1711-1 Cr-V DIN 3124

3/4"

Inch.



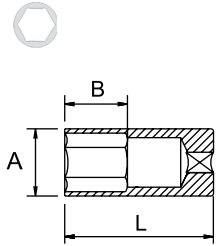
| COD y | AF | Inch | A | B | C | MAXIMUM TORQUE Nm | gr. | |
|-------|----|----------|----|----|----|-------------------|------|-----|
| 67595 | | 7/8" | 33 | | | | 210 | |
| 67596 | | 15/16" | 50 | 35 | 36 | 17 | 583 | 220 |
| 67597 | | 1" | | | | 665 | | |
| 67598 | | 1.1/16" | | | 24 | 707 | 270 | |
| 67599 | | 1.1/8" | | | 27 | 795 | 290 | |
| 67601 | | 1.1/4" | 55 | 44 | 28 | 984 | 310 | |
| 67602 | | 1.5/16" | | 46 | 39 | 29 | 1000 | 350 |
| 67603 | | 1.3/8" | | | 42 | 1084 | 400 | |
| 67604 | | 1.7/16" | 60 | 50 | | 30 | 1200 | 460 |
| 67605 | | 1.1/2" | | | | 1353 | 550 | |
| 67607 | | 1.5/8" | | 55 | 45 | 32 | 1450 | |
| 67608 | | 1.11/16" | 65 | 60 | | 34 | 1569 | 700 |
| 67610 | | 1.13/16" | | | 47 | 35 | | 850 |
| 67612 | | 2" | 70 | 70 | 48 | 41 | | |

UNE16501:2009, ISO 1711-1 Cr-V DIN 3124

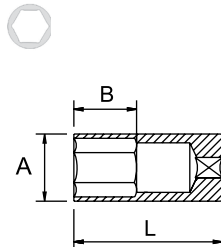
- x 50% aerospace chrome plating
- x 50% mirror polished chrome plating
- y 100% mirror polished chrome plating

LONG SOCKETS

3/4"
 mm



3/4"
 inch.



| COD x | AF | L | A | B | MAXIMUM TORQUE Nm | gr. | | |
|-------|------|---|----|----|-------------------|-----|----|---|
| 56900 | 19mm | | 29 | | | 300 | | |
| 56901 | 21mm | | 31 | | | 320 | | |
| 56902 | 22mm | | 32 | 26 | 569 | 360 | 10 | |
| 56903 | 23mm | | 33 | | | 380 | | |
| 56904 | 24mm | | 34 | | | 400 | | |
| 56905 | 26mm | | 37 | | 624 | 420 | | |
| 56906 | 27mm | | 38 | | 665 | 420 | | |
| 56907 | 29mm | | 40 | 28 | 751 | 460 | | 1 |
| 56908 | 30mm | | 42 | | 795 | 510 | | |
| 56909 | 32mm | | 44 | | 888 | 560 | | |
| 56910 | 34mm | | 47 | | 984 | 610 | 5 | |
| 56911 | 36mm | | 50 | 30 | 1084 | 670 | | |
| 56912 | 38mm | | 52 | 34 | 1200 | 700 | | |
| 56913 | 41mm | | 56 | | 1353 | 790 | | |

UNE16501:2009, ISO 1711-1 Cr-V DIN 3124

| COD y | AF | L | A | B | MAXIMUM TORQUE Nm | gr. | | |
|-------|---------|---|----|----|-------------------|-----|----|---|
| 56914 | 3/4" | | 29 | | | 300 | | |
| 56915 | 7/8" | | 32 | 26 | 569 | 360 | 10 | |
| 56916 | 15/16" | | 34 | | | 400 | | |
| 56917 | 1" | | 37 | | 583 | 410 | | |
| 56918 | 1.1/16" | | 38 | 28 | 665 | 420 | | 1 |
| 56919 | 1.1/8" | | 40 | | 707 | 460 | | |
| 56920 | 1.1/4" | | 44 | | 888 | 560 | 5 | |
| 56921 | 1.3/8" | | 48 | 30 | 1000 | 640 | | |
| 56922 | 1.1/2" | | 52 | 34 | 1200 | 700 | | |
| 56923 | 1.5/8" | | 56 | | 1353 | 790 | | |

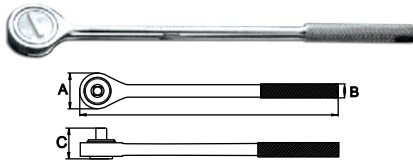
UNE16501:2009, ISO 1711-1 Cr-V DIN 3124

ADAPTER



| COD | 1/2" | gr. | | |
|-------|----------|-----|---|---|
| 65883 | 3/4-1" | 250 | 6 | 1 |
| 65886 | 3/4-1/2" | 135 | | |

REVERSIBLE RATCHET HANDLE



| COD | AF | L | A | B | C | gr. | |
|-------|------|-----|----|----|----|-----|---|
| 61863 | 3/4" | 500 | 67 | 26 | 57 | 2,3 | 6 |

DIN 3122

SWIVEL HANDLE



| COD | AF | L | Kg. | |
|-------|------|------|-----|---|
| 61473 | | 1000 | 3,7 | 6 |
| 61456 | 3/4" | 480 | 1,9 | |

SLIDING "T" HANDLE



| COD | AF | L mm | gr. | |
|-------|------|------|------|---|
| 61864 | 3/4" | 450 | 1200 | 5 |

DIN 3122

- x 50% aerospaceal chrome plating
- 50% mirror polished chrome plating
- y 100% mirror polished chrome plating

UNIVERSAL JOINT



| COD | | gr. | | |
|-------|------|-----|---|---|
| 61860 | 3/4" | 600 | 6 | 1 |

DIN 3123

EXTENSION



| COD | 3/4" | | gr. | | |
|-------|------|-----|------|---|---|
| 61865 | 3/4" | 4" | 410 | 5 | 1 |
| 63910 | | 5" | 480 | | |
| 61866 | | 8" | 700 | | |
| 63911 | | 12" | 1050 | | |
| 63912 | | 16" | 1300 | | |
| 63913 | | 20" | 1650 | | |

DIN 3123

TECHNICAL FEATURES

| | |
|------------------|--------|
| MATERIAL | Cr-V |
| MINIMUM HARDNESS | 44 HRC |
| FINISHING | CHROME |

SETS

3/4"



14pcs

mm = inch. =

| COD | C | | | | | | Kg. |
|-------|--|--|-------|--|--|--|-----|
| 61861 | 22-24-27-30-32-36-38-41-46-50mm | | 4"/8" | | | | |
| 61862 | 7/8"-15/16"-1"-1.1/8"-1.1/4"-1.7/16"-1.1/2"-1.5/8"-1.13/16"-2" | | 4"/8" | | | | 12 |

DISPLAYS

3/4"



86pcs

| LN. | COD:65300 | |
|-----|-----------|--|
| 7 | 19mm | |
| | 22mm | |
| | 24mm | |
| | 26mm | |
| | 27mm | |
| 6 | 29mm | |
| | 30mm | |
| | 32mm | |
| | 34mm | |
| 5 | 35mm | |
| | 36mm | |
| | 38mm | |
| | 41mm | |
| 4 | 46mm | |
| | 50mm | |

86pcs

| LN. | COD:65301 | |
|-----|-----------|--|
| 14 | 7/8" | |
| 7 | 15/16" | |
| | 1" | |
| 6 | 1.1/16" | |
| | 1.1/8" | |
| 12 | 1.1/4" | |
| | 1.5/16" | |
| 5 | 1.3/8" | |
| | 1.7/16" | |
| | 1.1/2" | |
| 4 | 1.5/8" | |
| | 1.13/16" | |
| | 2" | |